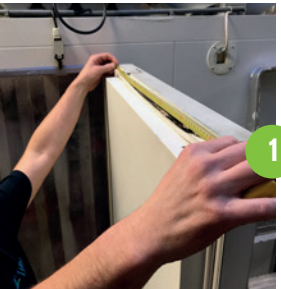


# PROCESS STEPS FOR FILTA DOOR SEAL SERVICE



FILTA DOOR SEAL SERVICE  
DELIVERY - INSTALLATION - MAINTENANCE - ADVICE



## MEASURING

The service operator will check all the refrigerating equipment and assess which door seals need to be replaced. The door seal profile type and size is determined for the defective seals.



## INSTALLATION

All of our service operators are trained to expertly replace the door seals. First, the old seal is removed. Then, the cabinet rim and the inside of the door or drawer are thoroughly cleaned. Subsequently, the replacement door seal is expertly placed.



## QUOTATION

Based on the assessment, the service operator draws up a quotation. If approved, the door seals are ordered at the factory and can usually be installed within 7 days. An express service is available if there is an urgency to replace the door seals.



## MAINTENANCE & ADVICE

Door seals are subject to wear. The lifespan of door seals usually depends on the intensity of use. However, what many people in the hospitality industry do not realise is that the frequency of cleaning and the used cleaning agent are also important factors. Let your service operator inform you about how you can maximise the life of door seals.



## BENEFITS OF DOOR SEAL SERVICE

### Comply with the rules for food safety as laid down in the Dutch Commodities Act

Torn and dirty door seals are a hotbed of pathogenic bacteria and mildew. Well-functioning and clean door seals are important for general hygiene and food safety assurance. With the Filta door seal service you can prevent problems and a potentially high fine incurred after an audit by the Netherlands Food and Consumer Product Safety Authority (NVWA).

### Extends the life of your door seals

Frequent cleaning with the proper cleaning agents and according to the correct method will extend the life of your door seals. This will reduce the frequency with which you have to buy new door seals. You save money!

### Save on your electricity bill and maintenance costs

Replacing defective door seals ensures that no unnecessary amount of electricity is used. In addition, it reduces your maintenance costs for the refrigerating equipment because the cooling compressor is less frequently activated.

### Attractive conditions and rates

Filta service operators purchase the door seals directly from the manufacturer. This allows the door seals to be offered at competitive prices.

### Fast service by a reliable partner

Filta service operators are able to provide you with new door seals within 7 days. An express service is available on request.

### Saves the environment

Replacing defective door seals ensures that no unnecessary amount of electricity is used to cool your products. This, in addition to a cost reduction, also yields benefits for the environment.

Your FiltaFry contact:



Filta Group Europe BV  
Maasstraat 1A  
7071 VR Uift  
Netherlands  
Phone +31 315 631478  
www.filtafry.eu



Disclaimer: door seals are subject to wear, and therefore no guarantee can be given. Let yourself be happy from advise your Fit-A-Seal/FiltaFry service technician.

## Filta door seal service for:

Cafeterias, restaurants, hotels, caterers,  
amusement parks, sports facilities, care institutions,  
fish shops, conference centres and company restaurants.



SAVE COSTS.  
ACT SUSTAINABLY.



# FILTA DOOR SEAL SERVICE

Our service includes the option to outsource maintenance and / or replacement of door seals in commercial refrigeration equipment such as professional refrigerators, refrigerated workbenches, cold rooms, et cetera.

Door seals are part of the maintenance plan of any professional kitchen from the perspective of food safety and energy consumption.

## FOOD SAFETY

Door seals are a hotbed for bacteria and mildew if they are torn or are not cleaned frequently. In addition, if you have a leaking door seal you will not know whether the products in the refrigerator are stored at the pre-set temperature. The local Food and Consumer Product Safety Authority sees preceding points as a reason to pay attention to the condition of door seals during a check.

## ENERGY CONSUMPTION

A door or drawer with a worn door seal will no longer close hermetically. This leak will bring warm outside air into the refrigerated area. To keep this area at the set temperature, the cooling compressor will have to work harder, considerably increasing its energy consumption. Additionally, a defective door seal on a freezer door causes bothersome ice formation.



## SUSTAINABLE AND EFFICIENT

Filta has a partnership with Fit-A-Seal, who manufacture customised door seals. Due to this cooperation, seals come directly from the manufacturer, without any intermediate trade. The cooperation enables fast and professional replacement of door seals for all of your kitchen's commercial refrigeration equipment.

Ask your Filta service operator to service your door seals without obligation.

## DID YOU KNOW THAT...

...door seals are a source of germs in a kitchen and that this makes cleaning them vital for food safety.

...the energy consumption of equipment may easily rise by 25% if the door and/or drawer seals are defective.

...grease residues can dry out the material of which door seals are made, which may cause them to crack and lose their function.

...your refrigerating equipment will need less maintenance and last longer if the cooling compressor is operated less frequently.



worn door seal

## WHAT WE OFFER:

- Door seals for all professional refrigerating equipment
- Regardless of brand
- Straight from the manufacturer
- High quality
- Fast delivery
- Maintenance and advice

## ENVIRONMENTAL IMPACT

In addition to the aspect of food safety, the condition of the door seals is also important in the context of sustainable business. Did you know that a refrigerator with a defective door seal will easily use 25% more energy?

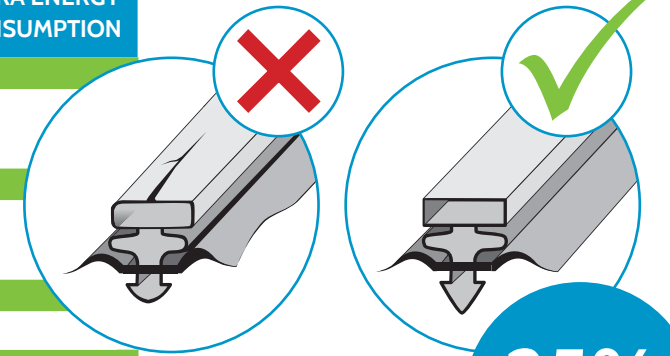
### ENERGY CONSUMPTION

Research has shown that a fridge with a defective door seal consumes more power. After replacing the door seal, the consumption went from 4kWh a day to 3kWh per day, a 25% saving!

Below we have calculated the total impact on the environment for an average kitchen if the door seals are defective due to wear or improper maintenance.

| ENERGY CONSUMPTION (annually) <sup>1)</sup> | DOOR SEAL CONDITION |          | EXTRA ENERGY CONSUMPTION |
|---|---------------------|----------|--------------------------|
|   | Worn                | Intact   |                          |
| <b>Refrigerated workbench</b>               |                     |          |                          |
| 2 drawer seals                              | 1370 kWh            | 1096 kWh | 274                      |
| 2 door seals                                |                     |          |                          |
| <b>Cold workbench</b>                       |                     |          |                          |
| 2 drawer seals                              | 1818 kWh            | 1455 kWh | 637                      |
| 2 door seals                                |                     |          |                          |
| <b>Standing fridge</b>                      |                     |          |                          |
| 1 door seal                                 | 1502 kWh            | 1202 kWh | 300                      |
| <b>Double-door standing freezer</b>         |                     |          |                          |
| 2 door seals                                | 1902 kWh            | 1522 kWh | 380                      |
| <b>Bar fridges (glass door)</b>             |                     |          |                          |
| 5 door seals                                | 1678 kWh            | 1343 kWh | 335                      |
| <b>Cold room</b>                            |                     |          |                          |
| 1 door seal                                 | 5616 kWh            | 4493 kWh | 1123                     |

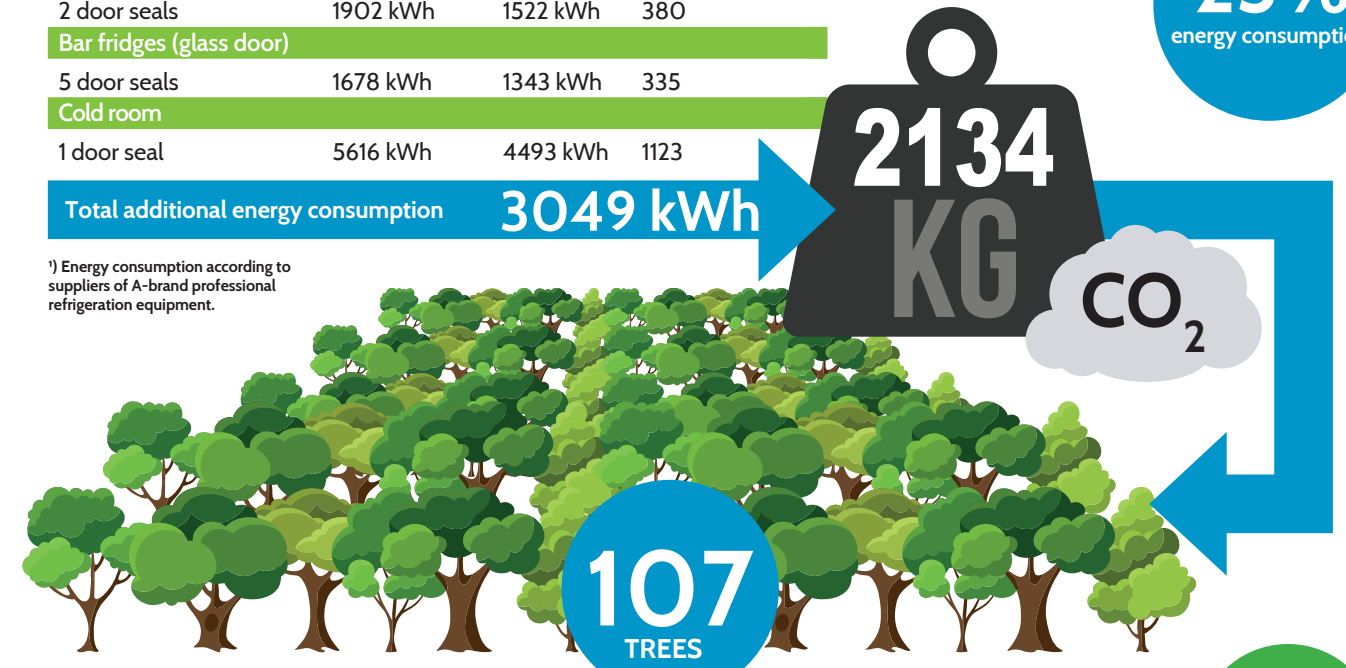
### CONDITION DOOR SEALS



**25%**  
energy consumption

Total additional energy consumption **3049 kWh**

<sup>1)</sup> Energy consumption according to suppliers of A-brand professional refrigeration equipment.



### REDUCTION OF CO<sub>2</sub> EMISSIONS

If care is put into replacing defective door seals, this will profit the environment in addition to saving on your energy costs.

The above stated saving on electricity reduces the emissions of harmful CO<sub>2</sub> by 2134 kg. It takes 107 trees to grow for a year to compensate for these additional CO<sub>2</sub> emissions.

### ENERGY COSTS

Calculation of extra energy costs per year (€0,21 / kWh).

**€ 640.29**

